

June 2, 2022

Center for Health Equity and Engagement Research (CHEER) and the Urban Health Alliance

UF

**Center for Health Equity
and Engagement Research**

College of Medicine – Jacksonville

UNIVERSITY of FLORIDA

The logo for UFHealth features the letters 'UF' in orange and 'Health' in blue, with a thin orange arc above the 'F'. Below this, the text 'UNIVERSITY OF FLORIDA HEALTH' is written in a smaller, dark blue, all-caps font. At the bottom, 'Urban Health Alliance' is written in a larger, dark blue font.

UFHealth
UNIVERSITY OF FLORIDA HEALTH
Urban Health Alliance

Urban Health Alliance

The Urban Health Alliance was formed in 2019 as a hospital/university initiative to address the social determinants of health of our patients and the community. The alliance is under the leadership of Ross Jones M.D. and Ann-Marie Knight.

Mission

To improve the health of residents through a multisector, social determinants focused, evidence-based approach to the health and well-being of people, particularly the most vulnerable

Values

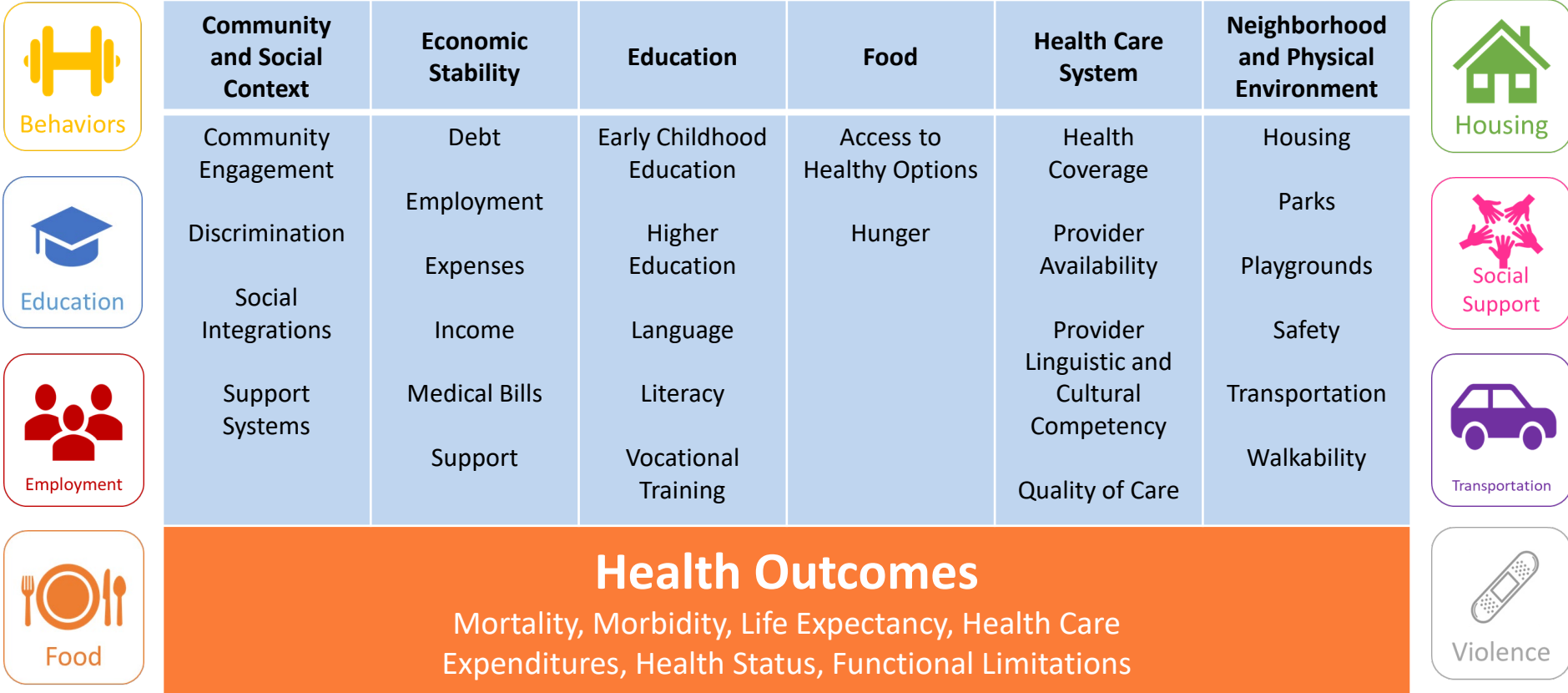
All Jacksonville residents achieve their full potential for health and well-being



Strategic Priorities

- ❑ Improve local community health using community-initiated, self-sustainable strategies and solutions
- ❑ Non-traditional models & collaboration strategies to address health social problems unique to Jacksonville
- ❑ Impact SDOH that affect health outcomes of Jacksonville residents across their life spans

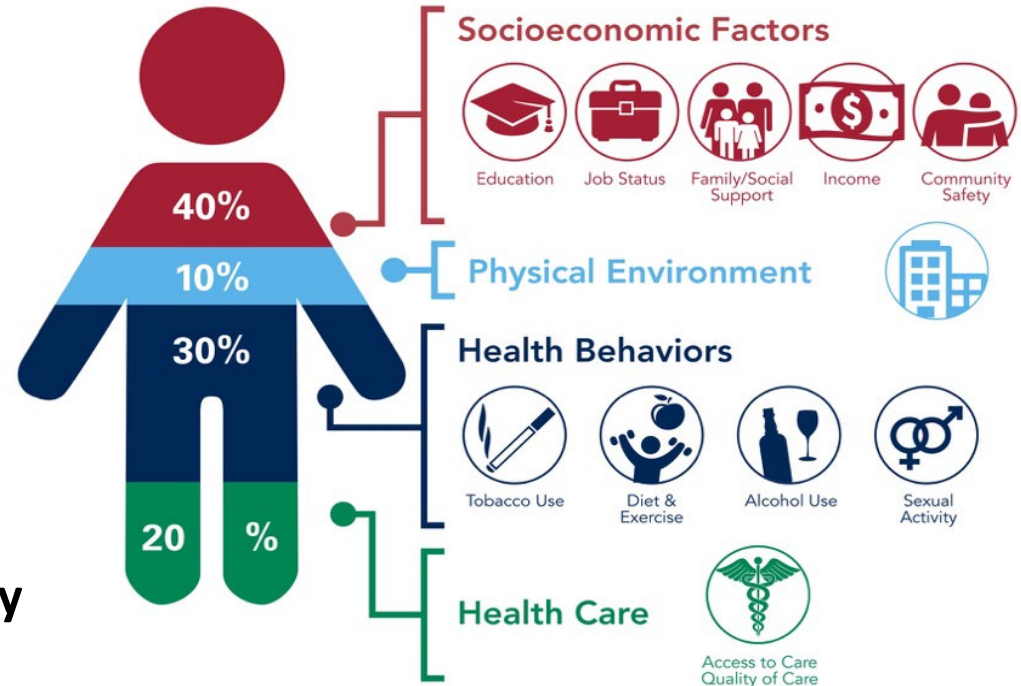
Social Determinants of Health



Social Determinants of Health Impact

- **80%** by **environment, determinants of health and behavior**
- **20%** related to the **health care we receive**

Social determinants of health **affects** us regardless of age, race or ethnicity



Urban Health Alliance

Services



Education



Research



Policy



Identify and implement programs to address SDOH and reduce health disparities

Provide education and training opportunities in our community for individuals of all ages

Conduct and provide support for innovative research to improve health equity and outcomes in our community

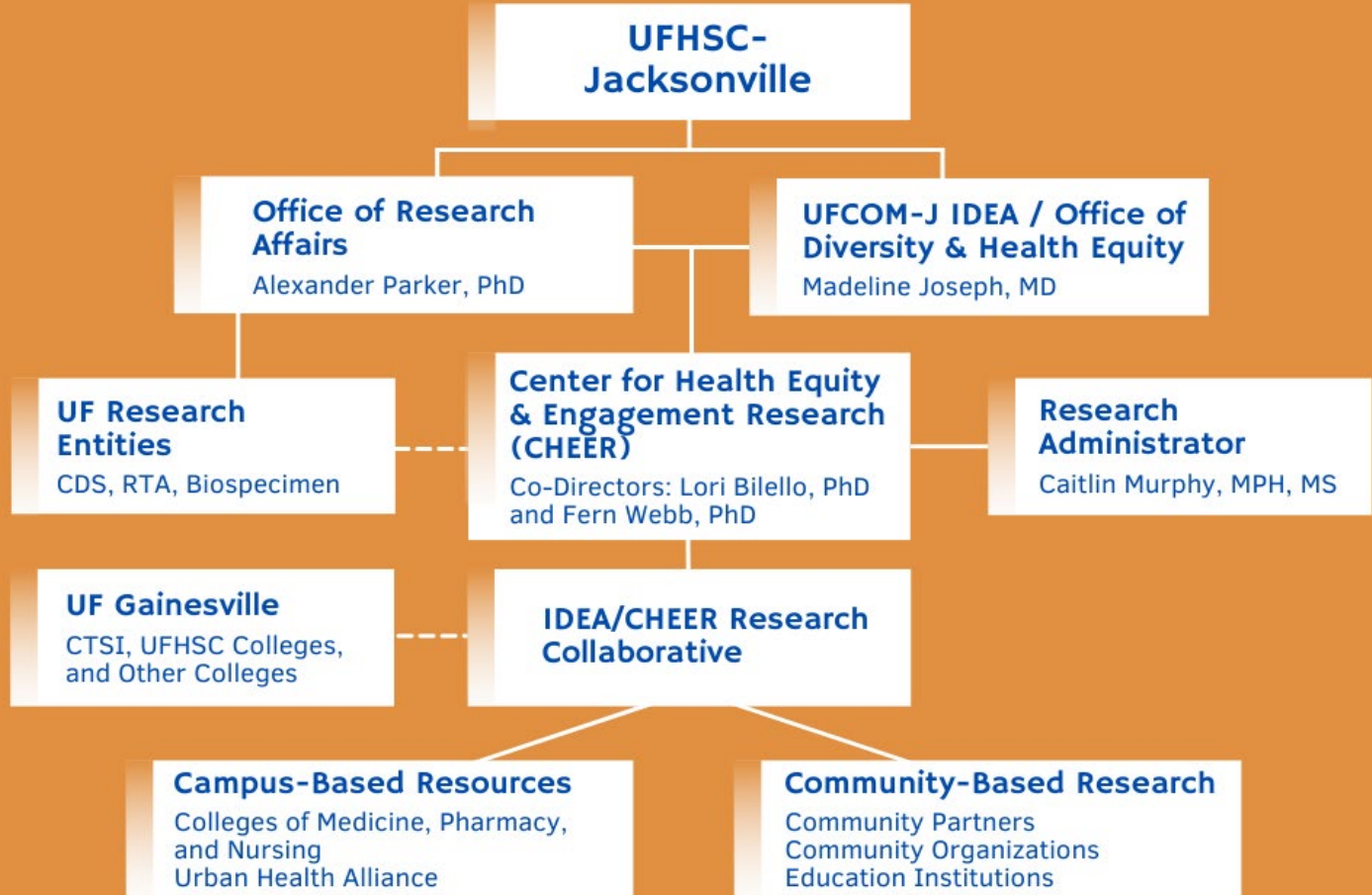
Provide empirical evidence to inform, create, and modify policies affecting population health

Center for Health Equity and Engagement Research (CHEER)

CHEER serves as the coordinating center for research focused on health equity, stakeholder engagement, and community health/population health improvement initiatives and evaluation research for UF Health.

Advance Medicine and Population Health	<ul style="list-style-type: none">◆ Design, test, implement, and evaluate interventions to improve equity in health care and health outcomes.◆ Increase understanding of the determinants that affect the quality and equity of health and health care.
Recruit and Retain Top Talent	<ul style="list-style-type: none">◆ Recruit and educate key stakeholders including clinical faculty/staff and community partners on community participatory research approaches and partner with them on research projects that advance health equity.
Grow and Enhance Partnerships	<ul style="list-style-type: none">◆ Foster and engage a diverse network of researchers, clinicians, and key stakeholders in developing, expanding, and implementing a research agenda that addresses barriers to health equity.

UF Research Infrastructure

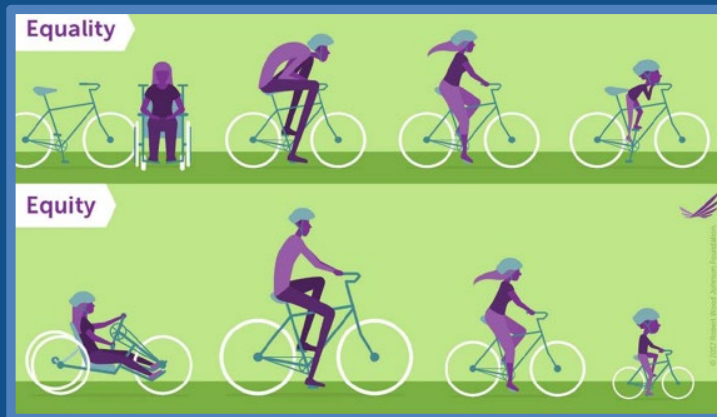


Health Equity Defined

“**Health Equity** is achieved when every person has the opportunity to attain his or her full health potential and no one is disadvantaged from achieving this potential because of social position or other socially determined circumstances.”

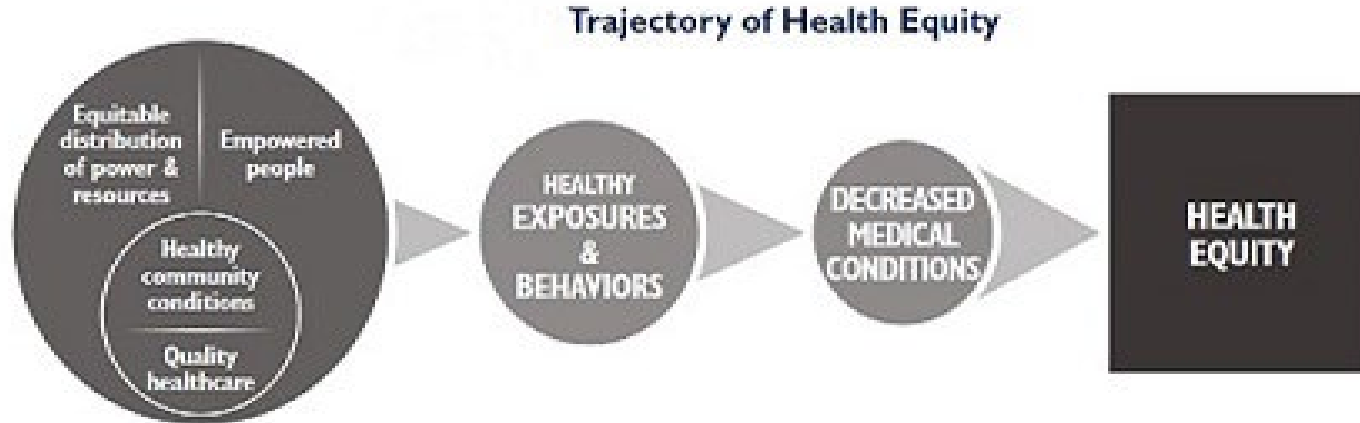


Center for Disease Control



Robert Wood Johnson Foundation

“It [**Health Equity**] requires removing obstacles to health such as poverty, discrimination, and their consequences, including powerlessness and lack of access to good jobs with fair pay, quality education and housing, safe environments, and health care.”

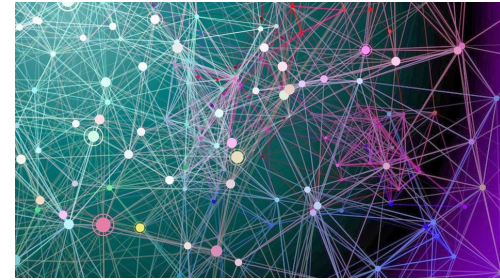


Stakeholder-Driven Engagement Research to Conduct Health Equity Research

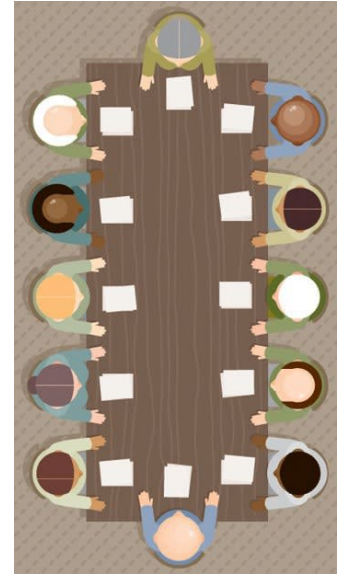
- Developed and implemented in collaboration and shared leadership with interested/fellow stakeholders
- Agenda built on stakeholders' needs and priorities
- Engages and requires stakeholders involvement in all phases of the research
- Is beneficial to all collaborators on some level with equitable involvement and impact for stakeholder groups

Stakeholder Connections to Facilitate Research

- Provide Health Equity and Community Engagement Resources
- Collaborate with UF faculty, staff, and administrators to develop programs and research initiatives that includes health equity and/or stakeholder engagement
- Collaborate with non-profit organizations to submit applications based on their behavioral, educational and social service areas and programs



- Received a Patient Centered Outcomes Research Institute (PCORI) Engagement Award in January 2021.
- The purpose of the PCORI Engagement Award is to support the development of a patient centered research collaborative (PCRC) that is built on the knowledge, experiences, and insight of patients, providers and community stakeholders to develop a meaningful patient-centered and community engaged research agenda.



Key activities for the project include:



Convening patients, stakeholder and community leaders to identify and develop strategic initiatives to reduce health disparities;



Creating a sustainable organizational structure, including a PCRC, for the Alliance to implement initiatives to reduce health disparities;



Adapting group decision making processes with patient and community partners to elicit prioritized research questions to guide research;



Providing the infrastructure for the collection and sharing of data within the Collaborative as well as other partners.

Patient Centered Research Collaborative

The Collaborative is charged to:



The collaborative will have at least 35 member stakeholders including patients, community members, providers, researchers (from multiple institutions), and organizational leaders.

<https://med.jax.ufl.edu/center-health-equity-engagement-research/resources/data-resources-reports/>

- Serve as a resource for organizations who are in need of reliable, valid data sources
- Build a database on health disparities in the region to include publicly available data/resources
 - Local hospitals
 - Health Departments
 - State and national data sources
- Assist with extracting, reporting and interpreting information with/for collaborators



Center for Health Equity & Engagement Research

Title	Purpose	Opportunity
Patient-Centered Research Collaborative (PCRC)	Support a patient centered research agenda built on the knowledge, experiences, and insight of patients, providers and community stakeholders	<ul style="list-style-type: none"> - Be an active member of the PCRC - Assist with setting the research agenda - Opportunity to conduct research/contribute to collective research agenda
GRACE	Understand patients' knowledge and willingness to engage in genomic research via technology	<ul style="list-style-type: none"> - Serve on a clinical advisory board - Conduct/collaborate on research regarding genes and gene therapy
Florida Registry for Aging Studies	Recruit and enroll older African American, Latino/Hispanic, and Caribbean [CN] adults into clinical research	<ul style="list-style-type: none"> - Share research opportunity with your network of patients, community members
Impact of COVID-19 on Cancer Care Delivery among Diverse Populations	Explore patients' and community members' experiences with cancer and cancer treatment during COVID-19	<ul style="list-style-type: none"> - Survey patients/community members regarding their experiences during COVID-19 - Analyze/report information regarding COVID-19
Florida-California Cancer Research, Education and Engagement (CaRE2) Health Equity Center	Eliminate cancer disparities in Blacks and Latinos, by increasing the pool of underrepresented Black and Latino scientists conducting health disparity research and increasing research capacity	<ul style="list-style-type: none"> - Education/present to community - Conduct collaborative research - Collaborate on biobanking
Integrating Patient Reported Outcomes (iPRO)	Adapting and integrating AHRQ pain management tools in Epic for primary care providers	<ul style="list-style-type: none"> - Share opportunity with your primary care colleagues

Community Health Worker Institute

- Provides an integrated training approach to prepare women to be eligible for the Florida CHW certification exam and join the healthcare workforce

Citizen Scientist Program

- CTSI developed curriculum to train patients and community member in research methods to assist in the implementation of research projects.

Youth Education for Advancing Health Careers (Y.E.A.H) Program

- Expose Darnell Cookman high school students to professionals in the healthcare and medical sciences

CHEER Contact Information

Lori Bilello, PhD, MBA, MHS

Co-Director

Department of Medicine
(904) 244-9202
Lori.Bilello@jax.ufl.edu

Caitlin Murphy, MPH, MS

Research Administrator

(904) 244-9626
Caitlin.Murphy@jax.ufl.edu

Fern Webb, PhD, MS

Co-Director

Department of Surgery
(904) 244-9859
Fern.Webb@jax.ufl.edu